

# Calculate Ratiometric Single Pair FRET Distributions

## Summary

This tutorial shows step-by-step, how to calculate a [FRET](#) histogram from single FRET pairs detected under single molecule conditions. The script requires a spectrally resolved fluorescence time trace. As a result, the distribution of FRET efficiencies of different molecules is shown which can be used to detect subpopulations.

## Prerequisites

**Note:** The script requires a time trace containing the fluorescence of two spectrally separated channels, one channel mainly detecting the fluorescence of the donor dye and the other channel detecting mainly the fluorescence of the acceptor dye.

The time traces can be acquired from single molecule events in a diluted solution, where the passages of single molecules are registered as “bursts”. Alternatively, traces obtained from a stationary single FRET pair can be analyzed, e.g. to observe conformational changes.

To record such traces, usually single molecule sensitive detectors as SPAD or Hybrid PMA are necessary to successfully detect single molecule fluorescence.

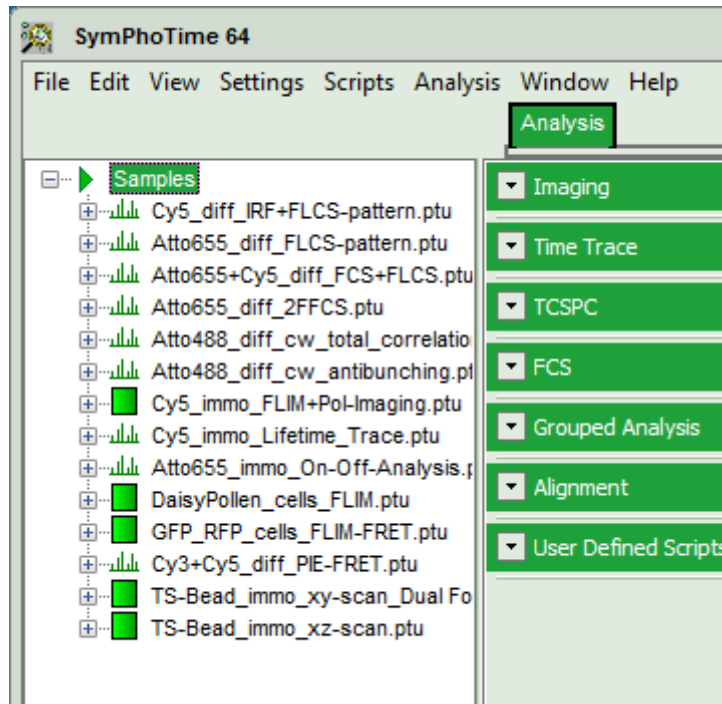
## Step-by-Step Tutorial

### Select a file and start the script

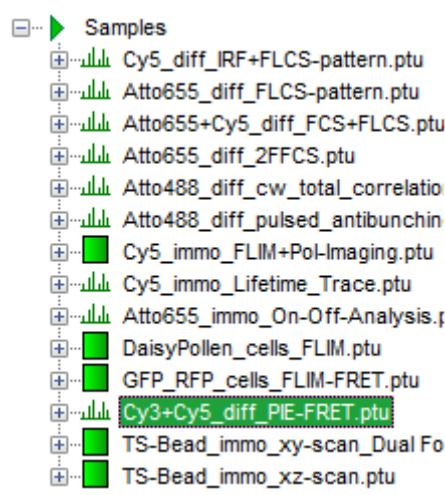
- Start [SymPhoTime 64](#) software.
- Open the “Samples” workspace via “File\open Workspace” from the main menu.

**Note:** The “Samples” workspace is delivered with the SymPhoTime 64 and on the DVD-ROM and contains example data to show the function of the SymPhoTime 64 data analysis. If you haven't installed it on your computer, copy it from the DVD onto a local drive before going through this tutorial.


**Response:** The files of the sample workspace are displayed in the workspace panel on the left side of the main window.



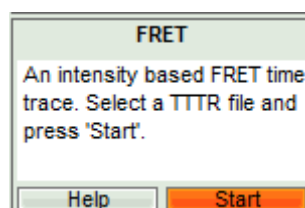
- Highlight the file Cy3+Cy5\_diff\_PIE-FRET.ptu by a single mouse click.



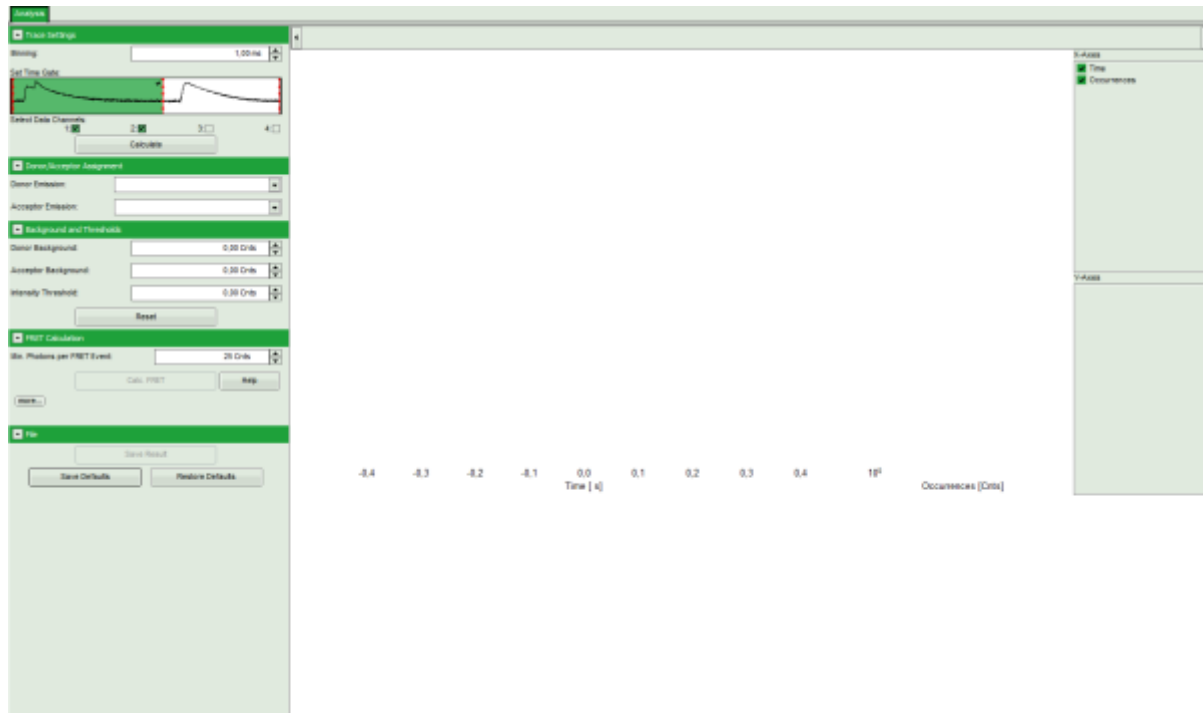
- Select the “Analysis” tab and in there, open the drop down menu “TimeTrace”.

**Note:** The drop down menu can be opened and closed by clicking on the grey button on the left side of the header of the drop down menu: 

- Start the “FRET” script by clicking on “Start”.



**Response:** The FRET script is applied to the file Cy3+Cy5\_diff\_PIE-FRET.ptu. Thereby, a new window opens:

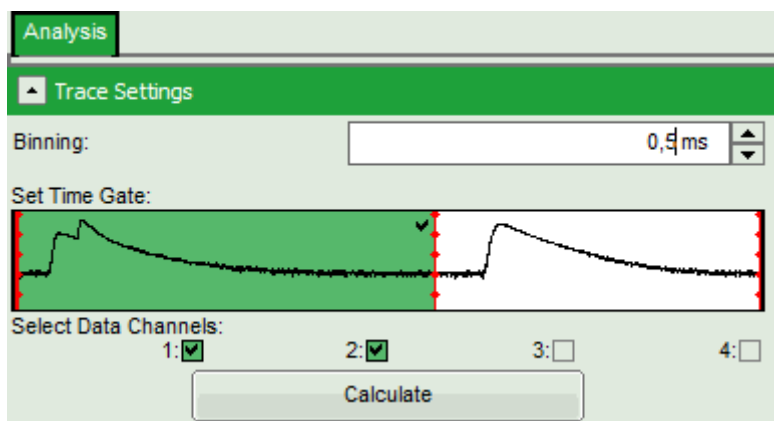


**Note:** The window contains three different regions:

1. **Left:** Fitting and analysis options.
2. **Upper center/right:** Time traces. As the time traces are not calculated yet, this graph is still empty.
3. **Lower center/right:** FRET distribution histogram and FRET radius histogram. As these distributions have not been calculated yet, this area is still empty.

- In the “Trace Settings” on the left, change the binning to 0,5 ms.

**Note:** If you are unsure which binning to select, calculate the FCS curve and check the diffusion time to see the average residence time of the sample in the laser focus.



- Leave the other parameters of the “Trace Settings” unchanged and press “Calculate”.

**Note:** Two channels need to be active in order to calculate spectral ratios.

The data in this file were obtained under PIE (Pulsed Interleaved Excitation) conditions: first, a 530 nm pulse excited the Cy3 dye and consequently, the fluorescence of Cy3 and Cy5 – the latter mainly excited via FRET – was detected in the two different channels. In this trace, donor and acceptor channel were recorded with a slight time delay, therefore two peaks can be seen in the green marked area. This region is used to calculate the FRET efficiency histogram. The unmarked white area shows the fluorescence response after the second pulse (at 635 nm), which was used to excite the Cy5 dye directly. This information is not used in this script (in fact, for this script also cw excitation could be used), but in the PIE-FRET script, which is explained in another tutorial ([Calculate Ratiometric Single Pair FRET Distributions Using the PIE-FRET Script](#)).

## Response:

- Three time traces are calculated and displayed in the window. The upper graph is automatically assigned to the donor channel (detector 2). The second graph shows the acceptor trace – automatically assigned to channel 1. The last graph shows the trace generated using the sum of both channels.
- The assignment of the detectors is shown in the “Donor-/Acceptor Assignment” pull down menu. If this assignment is wrong, just invert it. In this case, the traces are automatically adapted.
- For the donor and acceptor traces, automatically the background counts are calculated. In the third trace automatically an intensity threshold is calculated, which is used in the calculation of the FRET histogram later. These values are shown as green and red lines, respectively, in the graphs and can be manually adapted in the “Background and Thresholds” pull down menu.



- Click on the “more...” button of the “FRET Calculation” pull down menu.

The screenshot shows the 'FRET Calculation' dialog box. It has a green header with the title 'FRET Calculation'. Below the header, there is a label 'Min. Photons per FRET Event:' followed by a text input field containing '25 Cnts'. Below this, there are two buttons: 'Calc. FRET' and 'Help'. At the bottom left, there is a button labeled 'more...'. The dialog box is set against a light green background.

↓

The screenshot shows the 'FRET Calculation' dialog box with additional parameters visible. The 'more...' button from the previous screenshot is now highlighted in orange and labeled '...less'. Below this, there is a section for 'Burst Integration' with a green checkmark icon. Below that, there are three input fields: 'Gamma:' with a value of '1,000', 'Cross Talk:' with a value of '0,000', and 'Direct Exc.:' with a value of '0,0'. The dialog box is set against a light green background.

## Response:

- Additional parameters are displayed.

- Enter the correct parameters for “Gamma”, “Cross Talk” and “Direct Exc.” for the system.

**Note:** The check box **“burst integration”** should be checked for measurements of freely diffusing single molecules as in this example file. For observing conformational fluctuations of a single immobilized molecule, an analysis of the time bins set in the “Trace Settings” is appropriate. In that case, just deactivate the “Burst Integration” check box.

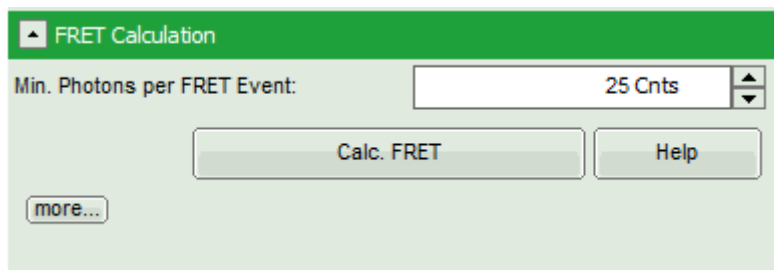
The **“Cross Talk”** can be determined by measuring a solution containing only the donor dye to check which percentage leaks into the acceptor channel.

The **“Direct Ext.”** parameter is determined by exciting a solution containing only the acceptor with just the laser line normally used to excite the donor.

**“Gamma”** corrects for the different detection efficiencies in the donor and the acceptor channel, influences e.g. by detector quantum efficiency as well as filter sets.

The equations used for the FRET calculations and an explanation of the parameters can be found when clicking on the “Help” button.

- Click “Calc. FRET”.

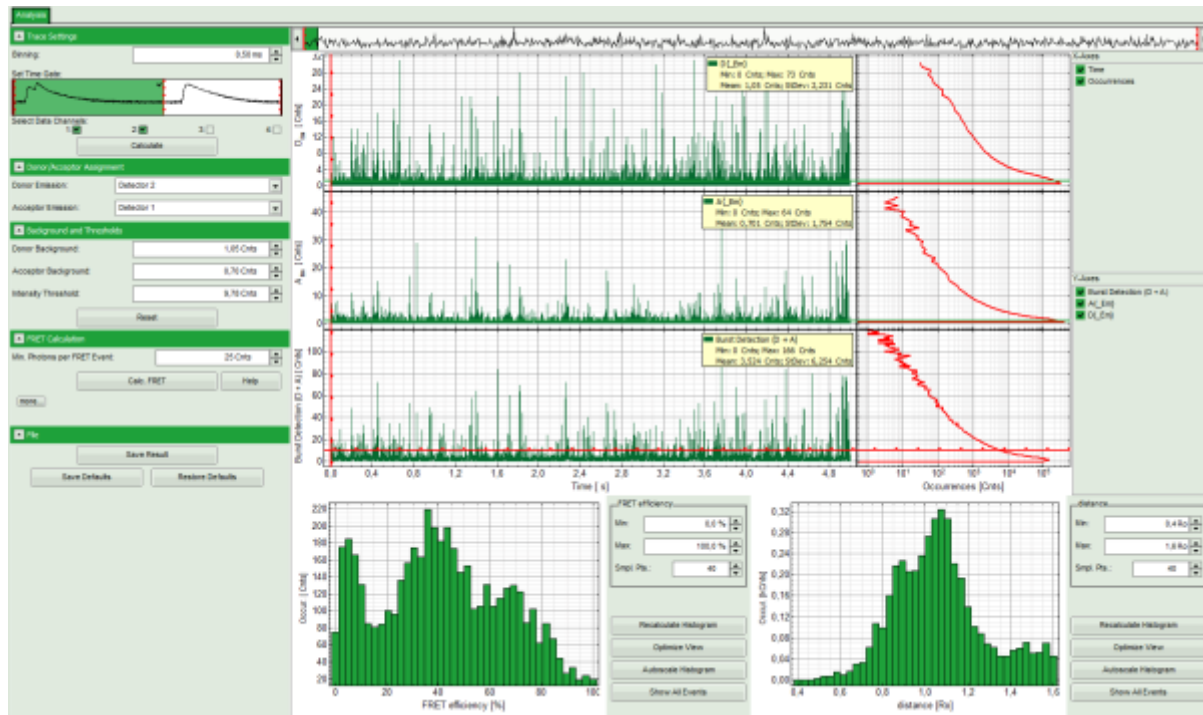


**Note:** The parameter “Min. Photons per FRET Event” is by default set to 25. In order to calculate distinct FRET efficiencies, a much lower parameter does not make sense, as the possible values for the FRET efficiencies are otherwise too much determined by the photon numbers of the event. For example, in a burst with just 10 photons, only 11 FRET values are numerically possible, which is quite rough.

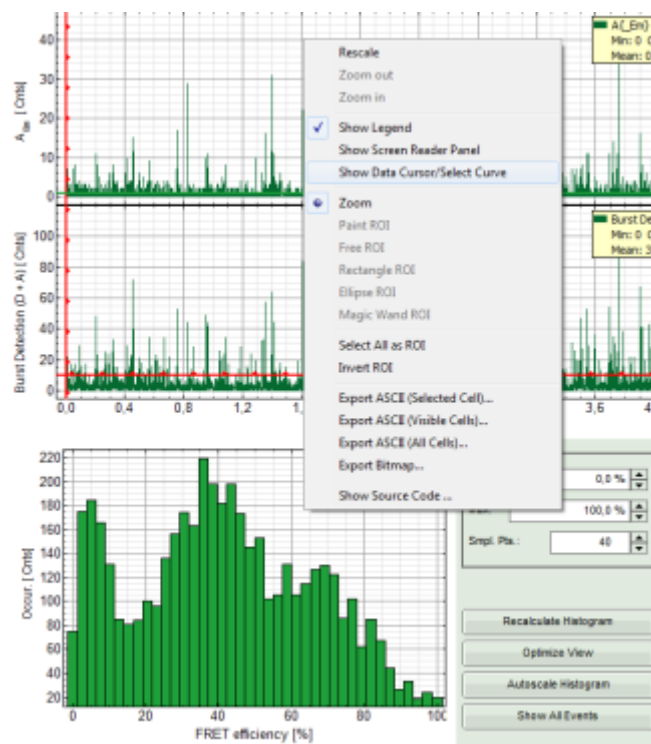
**Response:** The FRET efficiencies are calculated and the “FRET Efficiency” and “Distance” histograms are displayed in the lower part of the image.

**Note:** These values are only correct, if the correct parameters for spectral bleed through, direct excitation and channel sensitivity have been determined and entered into the script.

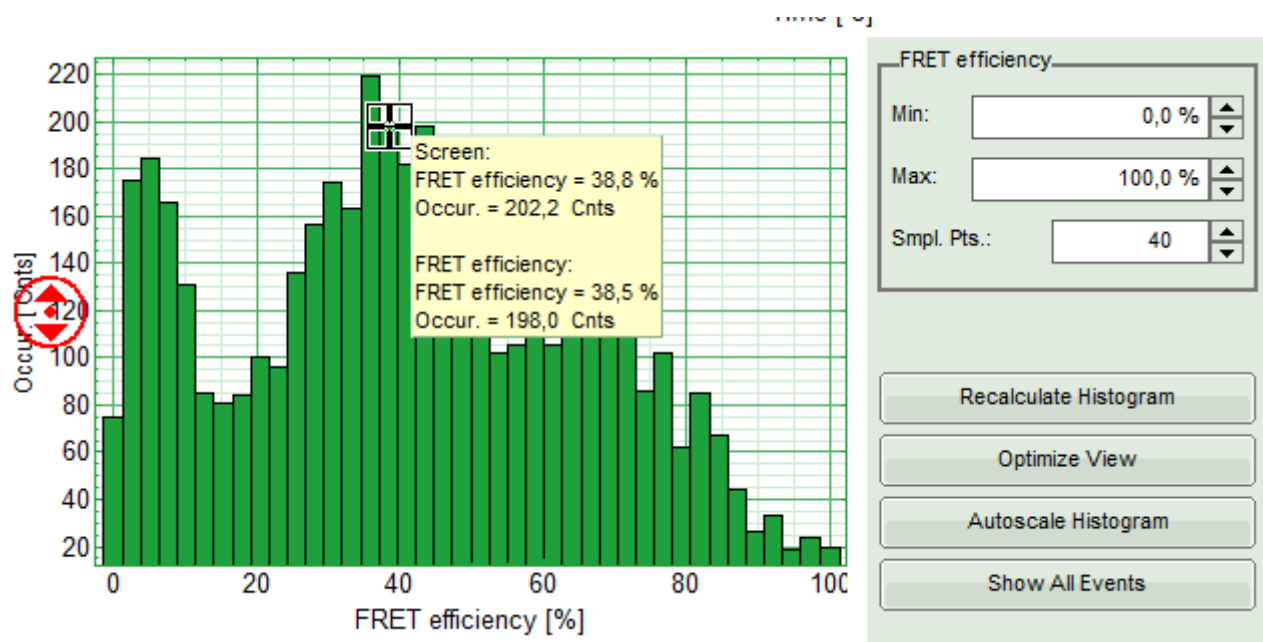
- The FRET-efficiency graph shows three discrete peaks. The first peak with low FRET intensity stems from the donor only molecules which were only labeled with the donor dye or where the acceptor was photobleached. The other two peaks are due to two different conformations of this RNA oligonucleotide measured in this sample.
- The distance histogram gives the distance of donor and acceptor dye in terms of “R0”, the Foerster distance. To transfer this into a nanometer scale, the Foerster distance must be known. Check standard textbooks<sup>1)</sup> about how to calculate the Foerster distance and what artifacts are involved.



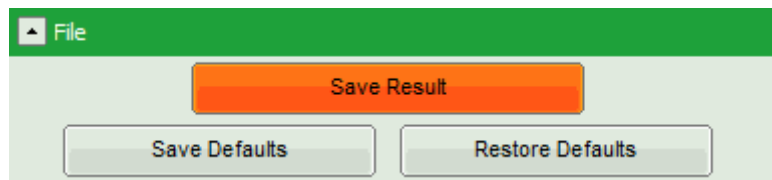
- If the FRET efficiencies of the three peaks should be indicated, place the mouse cursor over the graph, activate the context menu by a right mouse click and select “Show Data Reader/Select Curve”.



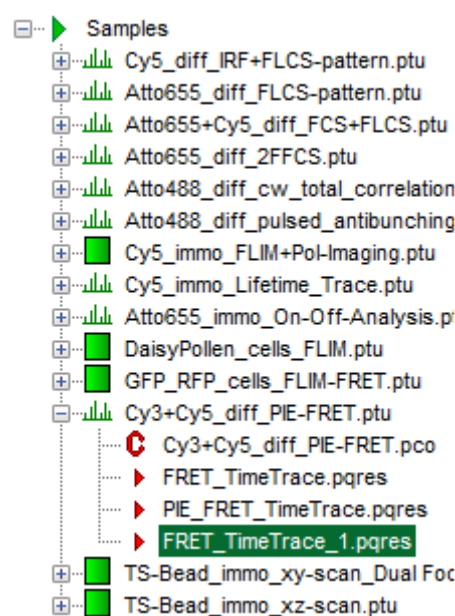
- Now place the mouse cursor over the peaks and read the FRET-efficiency.



- Store the result file by selecting: “Save Results”.



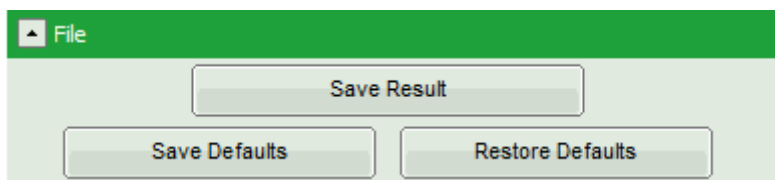
**Response:** A result file (FRET\_TimeTrace\_1.pqres) is stored under the raw data file (Cy3+Cy5\_diff\_PIE-FRET.ptu).



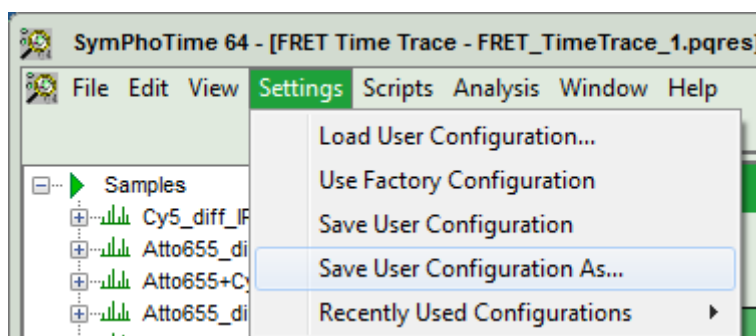
- Later, clicking on the result file reopens the file in the same way as it was stored.
- Now the necessary steps are finished, supposed the histograms were calculated with the correct parameters. They can be permanently registered in the script in the following way.

## Store Permanently the Correct Calculation Parameters for Calculating the FRET Script

- Open the newly generated analysis file (if it was closed before).
- If the parameters should be used automatically also for procession of other files, click “File” → “Save Defaults”.

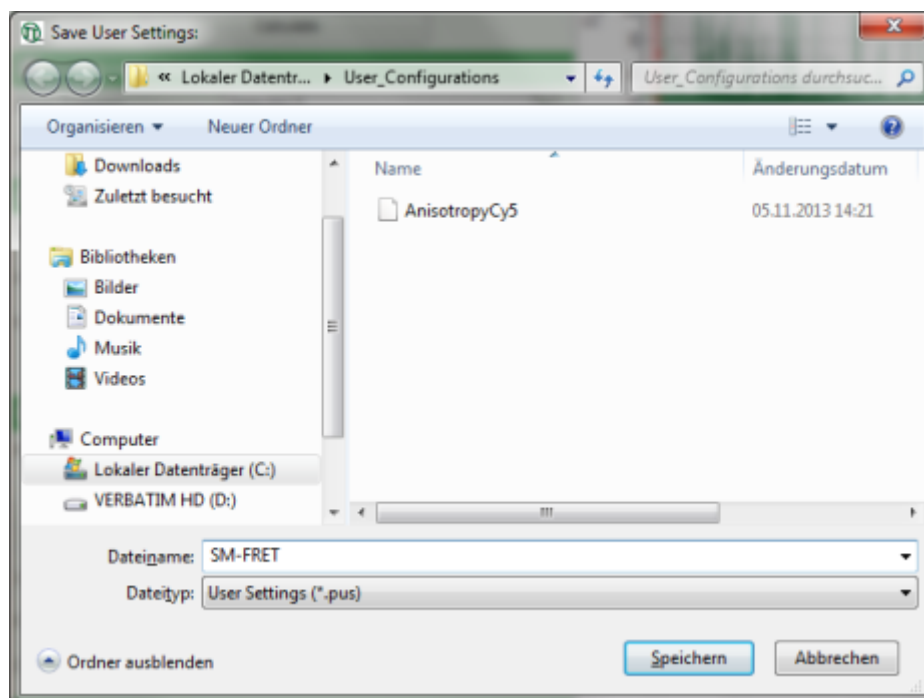


- Now, in the main menu, select “Settings\Save User Configuration as...”.



**Response:** A window pops up asking for a file name and a place to store the user configuration.

**Note:** Usually, when a system is delivered, a folder “C:\User\_Configurations” is already present on the hard disc. If not, create it and save the profile there.

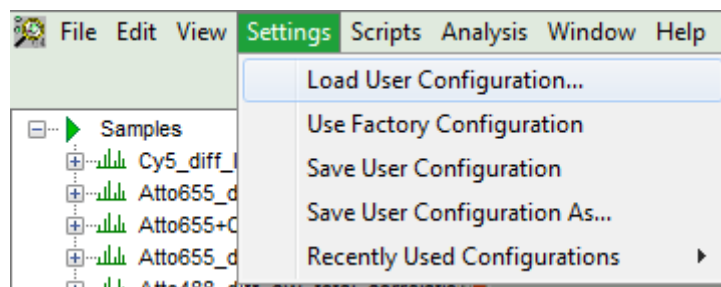


- Enter a name for the user configuration and press “Save”.

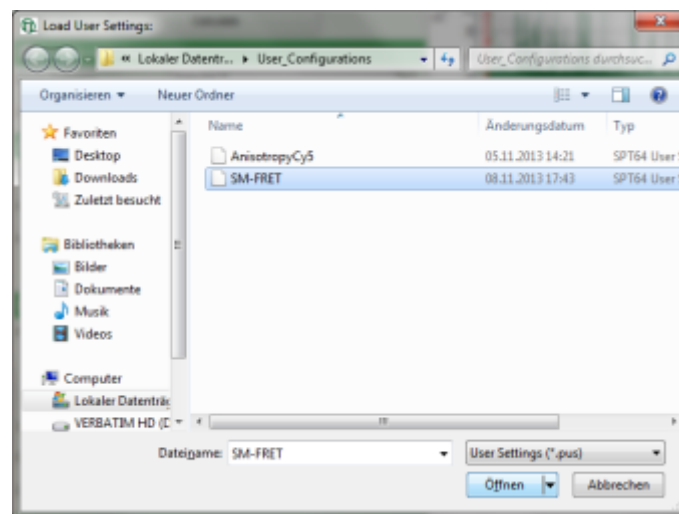
**Response:**



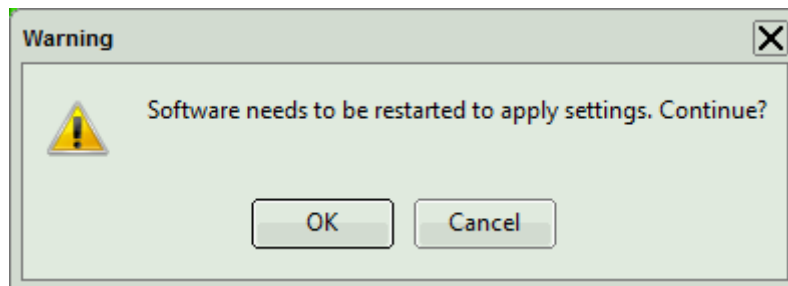
- The new user settings are saved under the given name as a file.
- To activate the user profile, go to “Settings\Load User Configuration”.



**Response:** A window opens to select the user settings file. Select the recently stored file.



**Response:** A window pops up with the message that the software needs to be restarted to apply changes. Press OK.



**Response:** Software restarts, but applies the user profile SM-FRET . pus.

- If the script is applied the next time to any file, the newly defined parameters will be used.

**Note:** Further information about the sample used in this measurement can be found under: J.L. Fiore et. al., Enthalpy-driven RNA-folding: single-molecule thermodynamics of tetraloop receptor tertiary interaction, Biochemistry (2009), 48(11), 2550-8. (<http://pubs.acs.org/doi/abs/10.1021/bi8019788>).

1)

J. Lakowicz, Principles of Fluorescence Spectroscopy, Springer

Copyright of this document belongs to PicoQuant GmbH. No parts of it may be reproduced, translated or transferred to third parties without written permission of PicoQuant GmbH. All information given here is reliable to our best knowledge. However, no responsibility is assumed for possible inaccuracies or omissions. Specifications and external appearances are subject to change without notice.



PicoQuant GmbH  
Rudower Chaussee 29 (IGZ)  
12489 Berlin  
Germany

P +49-(0)30-1208820-89  
F +49-(0)30-1208820-90  
info@picoquant.com  
www.picoquant.com